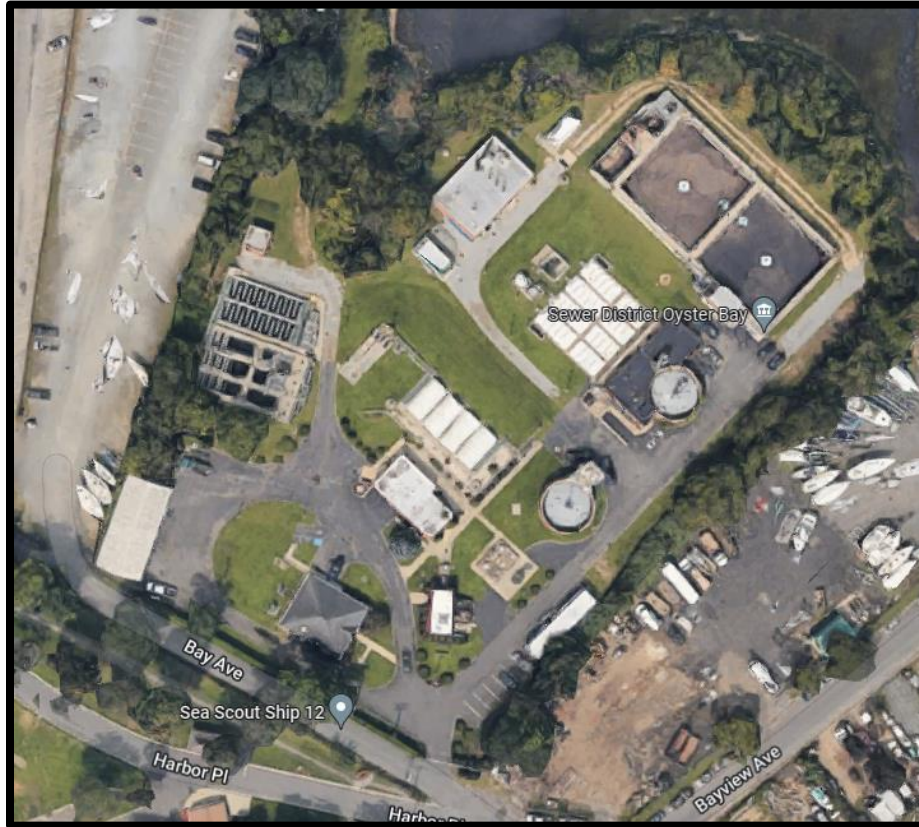


Wastewater Treatment Plant: Review and Available Capacity Determination



Prepared For: Oyster Bay Main Street Association
Date: September 2022



Prepared By: Walden Environmental Engineering, PLLC

TABLE OF CONTENTS

INTRODUCTION	2
EXISTING FACILITIES	2
RECENT OPERATIONAL PERFORMANCE	2
POLLUTANT REMOVAL EFFECTIVENESS.....	4
REMAINING AVAILABLE CAPACITY	4
PREVIOUS AND EXISTING ALLOCATIONS FOR CAPACITY	4
AVAILABLE UNALLOCATED CAPACITY	5
SUMMARY AND CONCLUSIONS.....	6
RECOMMENDATIONS.....	6

TABLES

Table 1. Average Daily Flow (2018-2020)
Table 2. Average Daily Flow Based on Highest Six Months (2018-2020)
Table 3. Remaining Design Flow Capacity at the Sewage Plant
Table 4. Summary of Estimated Allocations
Table 5. Available Unallocated Capacity at WWTP (gpd)
Table 6. Available Unallocated Capacity – Range of ERUs

APPENDICIES

Appendix A – FOIA Request for DMR/MRO
Appendix B – Wastewater Flow Data Analysis
Appendix C – Wastewater Flow Monthly Reports (MROs)
Appendix D – Sample Semi-Annual Report (Example Format)

INTRODUCTION

This Wastewater Treatment Plant Review and Available Capacity Determination (Report) was conducted and prepared by Walden Environmental Engineering, PLLC (Walden) at the request of the Oyster Bay Main Street Association (OBMSA). The purpose of this Report is to better determine the remaining treatment capacity that is currently available at the Oyster Bay Sewage Plant so that economic development efforts, strategies, and decisions can be better planned.

The Report is primarily prepared for purposes related to future planning and development issues in the Main Street area of Oyster Bay. Specifically, the Report is prepared for use as a tool for the following:

- Determining if the Oyster Bay wastewater treatment plant's actual flows are approaching or exceeding the design capacity.
- Making commitments for new connections with confidence that there is adequate capacity to serve the new as well as existing customers.
- Becoming more aware of how the facility is performing; and recommending appropriate steps to monitor and thus prevent overcommitting the facility.
- Providing all decision-makers with the information needed to make informed decisions about the capacity of the wastewater infrastructure and its ability to accommodate new connections in the Oyster Bay community.

EXISTING FACILITIES

The Oyster Bay Sewer District (District) incorporates approximately 1,000 acres of land, and the sanitary sewer collection system provides service to approximately 1,700 connections. The treatment plant was upgraded in the early 1990's to be able to process up to 1,800,000 gallons per day (gpd) of wastewater by means of primary treatment, secondary treatment and disinfection. The District has a current and effective State Pollutant Discharge Elimination System (SPDES) permit to discharge into the Oyster Bay Harbor. Three elected commissioners manage the District with a reported nineteen (19) employees.

RECENT OPERATIONAL PERFORMANCE

Monthly reports submitted to the New York State Department of Environmental Conservation (NYSDEC), Division of Water, were obtained through a Freedom of Information Act (FOIA) request and were reviewed. The FOIA request is shown in Appendix A. An analysis of the data received from this FOIA request is shown in Appendix B. Appendix C shows the data as it was received. The annual average of the monthly average of daily values of the volume of sewage treated at the Sewage Plant are presented in Table 1.

Table 1. Average Daily Flow (2018-2020)

Year	Average Daily Flow (gallons per day, gpd)
2018	1,026,000
2019	1,074,000
2020	1,047,000
Average Daily Flow (2018-2020)	1,049,000

The utilization values of the Sewer Plant are impacted by the level of seasonal activity in Oyster Bay. Therefore, the annual average of the six highest months were determined and used as a base flow for the calculation of available capacity. The annual average values of the six highest monthly average of daily values of wastewater treated at the Sewage Plant are presented in Table 2.

Table 2. Average Daily Flow Based on Highest Six Months (2018-2020)

Year	Average Daily Flow, Highest Six Months Flow (gpd)
2018	1,060,000
2019	1,102,000
2020	1,082,000
Average Daily Flow, Highest Six Months (2018-2020)	1,082,000

The resulting remaining capacity is determined by subtracting the highest 6-months annual average from the design average daily flow as presented in Table 3.

Table 3. Remaining Design Flow Capacity at the Sewage Plant

Average Daily Flow, Design	1,800,000 gpd
Average Daily Flow, Highest Six Months (from Table 2)	1,082,000 gpd
Remaining Design Flow Capacity	718,000 gpd

POLLUTANT REMOVAL EFFECTIVENESS

A review of the pollutant removal effectiveness during 2018, 2019 and 2020 was conducted as part of this Report. The current SPDES permit requires the monitoring and reporting of several components of the Sewage Plant's influent and effluent water. There are no reported significant issues meeting the SPDES permit requirements related to the Design Flow Capacity. Therefore, no adjustment of the values of Remaining Design Flow Capacity is necessary to help ensure the continued pollutant removal is at this level.

REMAINING AVAILABLE CAPACITY

Based on available and reviewed information, summarized by Table 3, the remaining capacity at the Sewage Plant can be estimated to be 718,000 gpd.

Sewer connections can be expressed in units of flow (gallons per day) or the equivalency of an expected single-family household (called an 'Equivalent Residential Unit' or 'ERU'). For use in this Report, an ERU is between 200 and 310 gallons per day and represents the expected sewage capacity needs of an average, new single-family home. Multiples of ERUs can then be applied to represent the expected sewage from commercial, institutional, industrial or other customer classifications.

Using the estimated 718,000 gpd of remaining sewer capacity, up to 2,316-3,590 new ERUs could be considered for connection to the sewer system without an expected exceedance of the Design Flow Capacity.

PREVIOUS AND EXISTING ALLOCATIONS FOR CAPACITY

Allocations of capacity have already been made but are not yet reflected in the Sewage Plant flow data. Future flows are expected to be generated from the following sources:

1. Properties which have current proposals pending before the Planning Board and approved projects currently under construction or near construction.
2. Vacant parcels in Oyster Bay that are expected to be developed.

Accurate information about vacant parcels and projects with sewer allocations in the Oyster Bay Sewer District was not available during this study. Therefore, it is estimated that 50,000 gpd (160-250 ERUs) are allocated for approved and pending projects as well as vacant parcels. This is summarized in Table 4 below.

Table 4. Summary of Estimated Allocations

Allocation Category	Flow (gpd)	Units (ERUs)
Approved and Pending Projects	50,000	160-250
Undeveloped Properties	50,000	160-250
Total Estimated Allocations	100,000	320-500

AVAILABLE UNALLOCATED CAPACITY

The available capacity at the Sewer Plant that has not already been allocated can be calculated by subtracting the Total Estimated Allocations presented in Table 4 from the Remaining Design Flow Capacity presented in Table 3.

The Available Unallocated Capacity (in gallons per day) at the Oyster Bay Sewage Plant is presented in Table 5.

Table 5. Available Unallocated Capacity at WWTP (gpd)

	Flow (gpd)
Remaining Design Flow Capacity (Table 3)	718,000
Less Total Estimated Allocations (Table 4)	100,000
Remaining Unallocated Capacity at WWTP	618,000

After accounting for allocations, the expected range of Available Unallocated Capacity (in ERUs) at the Oyster Bay Sewage Plant is presented in Table 6.

Table 6. Available Unallocated Capacity – Range of ERUs

	ERUs
Low End of Range, Unallocated Available Capacity (310 gallons per ERU), rounded	2,000
High End of Range, Unallocated Available Capacity (200 gallons per ERU), rounded	3,100

SUMMARY AND CONCLUSIONS

The findings of this Report indicate that current utilization of the Oyster Bay Sewage Plant based on the six highest monthly values of 2018, 2019 and 2020 is 1,082,000 gallons per day (Design Daily Average is 1,800,000 gpd). The remaining capacity is 718,000 gallons per day (*gross capacity*). After estimating that 100,000 gpd of sewer capacity has already been allocated to vacant parcels and current projects which aren't represented in the sewer flow data, the net remaining capacity at the Oyster Bay Sewage Plant is an estimated 618,000 gallons per day. This is equivalent to the sewer capacity demand of approximately 2,000 to 3,100 new single-family homes.

RECOMMENDATIONS

Available capacity at a community's sewage treatment facilities is often relied upon as a primary indicator of a community's readiness for redevelopment and growth. Therefore, enhanced monitoring and awareness of this value is recommended. To best monitor and manage this community resource, the type of review and reporting done in this Report should be repeated no later than the soonest of the following:

1. Full data from 2021, 2022 and 2023 has been collected (expected in early 2024).
2. The Highest 6-month average daily flow becomes more than 1,500,000 gpd (83% of the 1,800,000 gpd Design Flow Capacity) over any rolling 12-month period.
3. More than 1,000 ERUs of unallocated available capacity (Table 6) become allocated to new projects, redevelopments or growth.

The Oyster Bay community could consider a more open and transparent tracking and reporting of undeveloped properties and the expected sewer use of approved/pending projects. Although not required, this awareness and sharing of information could help planning efforts throughout the community of Oyster Bay.

The Oyster Bay community could consider a preliminary study of treatment capacity expansion potential at the Sewage Plant. The study should target identifying cost-effective measures and improvements that could be taken to increase the capacity of the Sewage Plant by approximately 20% to 30% (360,000 to 540,000 gallons per day). Although an expansion is not necessary at this time, a preliminary study could provide a valuable planning tool for the community of Oyster Bay. Such a preliminary study could be completed by the District or other qualified experts.

The District should be asked to prepare a semi-annual interim report, as outlined in this Recommendations section (and an example provided in Appendix D), and make it accessible to the greater community of Oyster Bay by the end of January and July of each year for the prior six months.

Appendices

Wastewater Treatment Plant: Review and Available Capacity Determination

Oyster Bay, New York

Appendix A: FOIA Request for DMR/MRO

Appendix B: Wastewater Flow Data Analysis

Appendix C: Wastewater Flow Monthly Reports (MROs)

Appendix D: Sample Semi-Annual Report (Example Format)

Appendix A

FOIA Request for DMR/MRO

**Wastewater Treatment Plant:
Review and Available Capacity Determination**



Thomas (Ted) Nitza, Jr., P.E.
Vice President
Walden Environmental Engineering
16 Spring Street
Oyster Bay, New York 11771

April 14, 2021

Thomas D. Galasso
Commissioner
Oyster Bay Sewer District
15 Bay Avenue
Oyster Bay, New York 11771
(516) 922-4171

RE: FOIA Request for DMR/MRO for Oyster Bay Sewer District

Dear Commissioner Galasso:

Under the New York Freedom of Information Law, N.Y. Pub. Off. Law sec. 84 et seq., I am requesting an opportunity to inspect or obtain copies of public records that include the Oyster Bay Sewer District Daily Monitoring Reports (DMR) or Maintenance, Operations or Repair Reports (MRO) for the years of 2018-2020.

If there are any fees for searching or copying these records, please inform me if the cost will exceed \$100. However, I would also like to request a waiver of all fees and/or I am willing to accept emailed versions of the same material.

The New York Freedom of Information Law requires a response time of five business days. If access to the records I am requesting will take longer than this amount of time, please contact me with information about when I might expect copies or the ability to inspect the requested records.

For better understanding, I have attached examples of the information we are seeking.

If you deny any or all of this request, please cite each specific exemption you feel justifies the refusal to release the information and notify me of the appeal procedures available to me under the law.



Thank you for considering my request.

Sincerely,

A handwritten signature in black ink, which appears to read "Thomas (Ted) Nitza, Jr.".

Thomas (Ted) Nitza, Jr., P.E.
Tnitza@walden-associates.com
(260) 416-6188

Attachment: Example (*Redacted*) DMR/MRO

Appendix B

Wastewater Flow Data Analysis

**Wastewater Treatment Plant:
Review and Available Capacity Determination**

2018				2019				2020			
Year	Month	Flow		Year	Month	Flow		Year	Month	Flow	
		Average	Top 6 Month			Average	Top 6 Month			Average	Top 6 Month
2018	January	0.964		2019	January	1.088	1.088	2020	January	1.046	1.046
	February	1.051	1.051		February	1.032			February	1.044	
	March	1.120	1.12		March	1.061			March	1.091	1.091
	April	1.026	1.026		April	1.087	1.087		April	1.135	1.135
	May	1.013			May	1.131	1.131		May	1.061	1.061
	June	1.000			June	1.071	1.071		June	1.012	
	July	0.963			July	1.101	1.101		July	1.011	
	August	1.016			August	1.071			August	0.976	
	September	1.030	1.03		September	1.039			September	0.990	
	October	0.999			October	1.050			October	1.033	
	November	1.057	1.057		November	1.024			November	1.060	1.060
	December	1.079	1.079		December	1.134	1.134		December	1.101	1.101

				WWTP Design Average Day:	1.8	MGD
				Average Flow		
				12 month	% of 1.8	Top 6 months
					% of 1.8	
				2018	1.026	57%
					1.060	58.9%
				2019	1.074	60%
					1.102	61.2%
				2020	1.047	58%
					1.082	60.1%
				2018-2020	1.049	58%
					1.082	60%
					0.718	Million Gallons per day
				Remaining Capacity at WWTP	(Gross)	718,000 gallons per day
				1.0 ERU:		Range of Capacity Available
				310 per single family home	2,316	single family homes
				200 per single family home	3,590	single family homes
				Remaining Capacity at WWTP	(Net)	100,000 Already Allocated/Planned
						618,000 Remaining for Growth
				1.0 ERU:		Range of Capacity Available
				310 per single family home	1,994	single family homes
				200 per single family home	3,090	single family homes

Appendix C

Wastewater Flow Monthly Reports (MROs)

**Wastewater Treatment Plant:
Review and Available Capacity Determination**

OYSTER BAY STP FACILITY OPERATION REPORT PAGE 1 CALCULATIONS
 NY0021822

DAY	DATE	PRECIP IN/DAY	VOLUME OF SEWAGE TREATED		D.O. EFFL	TEMPERATURE(F)		pH (S.U.)		SET SOLIDS (ML)		CBOD ₅ (MGL)		TSS (MGL)		TOTAL NITROGEN	
			INST MIN	DAILY AVG		INST MAX	INFL	EFFL	INFL	EFFL	INFL MAX	EFFL MAX	INFL	EFFL	INFL	EFFL	INFLUENT (mg/l)
MON	1/1/2018	0		0.889	11.7	45.0	39.0	7.6	7.8								
TUES	1/2/2018	0		0.9850	10.6	45.0	38.0	7.4	7.5								
WED	1/3/2018	0		0.9290	9.6	45.0	39.0	7.4	7.4								
THURS	1/4/2018	0.8		0.9680	9.9	44.0	38.0	7.3	7.4								
FRI	1/5/2018	1		0.9700	10.2	42.0	37.0	7.4	7.5			160	3.4	156	5.2	47.3	4.80
SAT	1/6/2018	0		0.9000	9.8	42.0	36.0	7.3	7.5								
SUN	1/7/2018	0		0.9820	9.9	42.0	36.0	7.3	7.4								
MON	1/8/2018	0		0.9010	8.9	42.0	36.0	7.3	7.5								
TUES	1/9/2018	0		1.0280	9.2	46.0	42.0	7.3	7.5								
WED	1/10/2018	0		0.8850	5.9	45.0	42.0	7.3	7.4								
THURS	1/11/2018	0		0.9230	7.9	46.0	43.0	7.3	7.3			139	2.2	114	4	40.3	3.80
FRI	1/12/2018	0.6		0.9860	7.4	47.0	44.0	7.3	7.5								
SAT	1/13/2018	0.2		1.0400	8.9	46.0	43.0	7.3	7.4								
SUN	1/14/2018	0		1.0550	7.9	46.0	43.0	7.3	7.3								
MON	1/15/2018	0		0.9390	8.4	44.0	40.0	7.3	7.5								
TUES	1/16/2018	0		0.9700	8.6	44.0	40.0	7.3	7.5								
WED	1/17/2018	0.2		0.9850	9.2	44.0	41.0	7.3	7.4								
THURS	1/18/2018	0		0.9620	8.6	42.0	40.0	7.3	7.4			132	2.2	136	4	30.5	4.10
FRI	1/19/2018	0		0.9350	11.1	42.0	40.0	7.2	7.4								
SAT	1/20/2018	0		0.9840	10.4	44.0	41.0	7.3	7.4								
SUN	1/21/2018	0		0.8220		46.0	41.0										
MON	1/22/2018	0		1.0940	8.9	46.0	44.0	7.3	7.4								
TUES	1/23/2018	0.6		0.9920	9.2	46.0	43.0	7.3	7.4								
WED	1/24/2018	0		0.9950	8.6	46.0	42.0	7.3	7.4								
THURS	1/25/2018	0		0.9510	8.9	46.0	42.0	7.3	7.4			142	2.1	108	4.8	37.1	4.20
FRI	1/26/2018	0		0.9990	8.6	45.0	42.0	7.3	7.4								
SAT	1/27/2018	0		0.8900	8.9	46.0	44.0	7.3	7.5								
SUN	1/28/2018	0.2		0.9760	8.6	45.0	42.0	7.3	7.4								
MON	1/29/2018	0		0.9760	10.7	46.0	44.0	7.2	7.3								
TUES	1/30/2018	0		1.0090	9.7	46.0	43.0	7.2	7.3								
WED	1/31/2018	0		0.9530	11.7	42.0	40.0	7.3	7.4								
		3.60		0.9640	9.2	44.6	40.9	7.4	7.5	0							
		TOTAL PRECIP		MONTHLY AVG	MONTHLY AVG	MONTHLY INFL	MONTHLY EFFL	MAX pH	MAX pH	MON MAX	MON MAX					TOTAL NITROGEN INFLUENT	TOTAL NITROGEN EFFLUENT
								7.2	7.3						308.2	33.6	lbs/day

GRIT REMOVAL FROM PLANT AMOUNT	YARDS
SCREENINGS REMOVAL FROM PLANT AMOUNT	279.0 CUBIC FEET

MAX TEMPERATURE (F)	44.0
---------------------	------

OYSTER BAY STP FACILITY OPERATION REPORT PAGE 1 CALCULATIONS
 NY0021822

MLC

DAY	DATE	PRECIP IN/DAY	VOLUME OF SEWAGE TREATED		D.O. EFFL	TEMPERATURE(F)		pH (S.U.)		SET SOLIDS (ML/L)		CBOD ₅ (MG/L)		TSS (MG/L)		TOTAL NITROGEN	
			INST MIN	DAILY AVG		INST MAX	INFL	EFFL	INFL	EFFL	INFL	EFFL	INFL	EFFL	INFL	EFFL	INFL
SUN	4/1/2018	0		1,102		8.9	48.0	45.0	7.2	7.3							
MON	4/2/2018	0.3		0.9370													
TUES	4/3/2018	0.3		1.0420		11.3	42.0	40.0	7.4	7.7							
WED	4/4/2018	0.1		1.0150		10.9	46.0	43.0	7.3	7.4							
THURS	4/5/2018	0		1.0080		9.6	45.0	43.0	7.4	7.5		118	2.1	120	4	29.0	3.90
FRI	4/6/2018	0		1.0260		9.4	45.0	43.0	7.3	7.5							
SAT	4/7/2018	0		0.9590		8.8	45.0	43.0	7.3	7.5							
SUN	4/8/2018	0		1.0760		10.9	46.0	43.0	7.3	7.4							
MON	4/9/2018	0		1.0160		11.3	46.0	43.0	7.5	7.3							
TUES	4/10/2018	0		0.8900		10.2	46.0	44.0	7.4	7.5							
WED	4/11/2018	0		0.9890		9.9	46.0	44.0	7.4	7.5							
THURS	4/12/2018	0		0.9970		9.6	47.0	44.0	7.3	7.5		86	4.1	104	5.2	26.3	4.10
FRI	4/13/2018	0		1.0580		6.8	48.0	45.0	7.6	7.5							
SAT	4/14/2018	0		0.9110		10.9	46.0	46.0	7.3	7.4							
SUN	4/15/2018	0.3		1.0540		9.9	46.0	43.0	7.4	7.5							
MON	4/16/2018	2.5		0.9530		9.6	42.0	44.0	7.5	7.7							
TUES	4/17/2018	0		1.2800		10.1	46.0	40.0	7.6	7.7							
WED	4/18/2018	0		1.0700		9.9	45.0	48.0	7.5	7.6							
THURS	4/19/2018	0.2		1.1410		8	46.0	47.0	7.7	7.7		96.5	2	60	4	22.0	6.70
FRI	4/20/2018	0		1.0730		9.2	46.0	44.0	7.5	7.6							
SAT	4/21/2018	0		0.9760		9.6	47.0	44.0	7.4	7.6							
SUN	4/22/2018	0		1.0180		9.2	46.0	45.0	7.5	7.6							
MON	4/23/2018	0		1.0500		9.6	46.0	44.0	7.3	7.5							
TUES	4/24/2018	0		1.0350		9.3	51.0	44.0	7.4	7.5							
WED	4/25/2018	0.2		0.9940		9.7	52.0	48.0	7.4	7.7							
THURS	4/26/2018	0.4		1.0320		9.4	54.0	48.0	7.4	7.6							
FRI	4/27/2018	0.1		1.0500		9.8	55.0	50.0	7.5	7.7		134	6.6	114	10	33.6	11.90
SAT	4/28/2018	0		0.9910		9.7	55.0	51.0	7.4	7.6							
SUN	4/29/2018	0.2		1.0100													
MON	4/30/2018	0		1.0220		9.2	54.0	50.0	7.6	chuck15							
		4.60				9.7	47.4	44.9	7.7	7.7	0						
		TOTAL PRECIP		MONTHLY AVG	MONTHLY INFL	MONTHLY EFFL	MAX pH	MIN pH	MAX pH	MIN pH	MON MAX	MON MAX					
				1.0258	47.4	44.9	7.7	7.3	7.7	7.3							
				AVG	MONTHLY INFL	MONTHLY EFFL	MAX pH	MIN pH	MAX pH	MIN pH	MON MAX	MON MAX					
					47.4	44.9	7.7	7.3	7.7	7.3							
					MONTHLY INFL	MONTHLY EFFL	MAX pH	MIN pH	MAX pH	MIN pH	MON MAX	MON MAX					
					47.4	44.9	7.7	7.3	7.7	7.3							
					MONTHLY INFL	MONTHLY EFFL	MAX pH	MIN pH	MAX pH	MIN pH	MON MAX	MON MAX					
					47.4	44.9	7.7	7.3	7.7	7.3							
					MONTHLY INFL	MONTHLY EFFL	MAX pH	MIN pH	MAX pH	MIN pH	MON MAX	MON MAX					
					47.4	44.9	7.7	7.3	7.7	7.3							
					MONTHLY INFL	MONTHLY EFFL	MAX pH	MIN pH	MAX pH	MIN pH	MON MAX	MON MAX					
					47.4	44.9	7.7	7.3	7.7	7.3							
					MONTHLY INFL	MONTHLY EFFL	MAX pH	MIN pH	MAX pH	MIN pH	MON MAX	MON MAX					
					47.4	44.9	7.7	7.3	7.7	7.3							
					MONTHLY INFL	MONTHLY EFFL	MAX pH	MIN pH	MAX pH	MIN pH	MON MAX	MON MAX					
					47.4	44.9	7.7	7.3	7.7	7.3							
					MONTHLY INFL	MONTHLY EFFL	MAX pH	MIN pH	MAX pH	MIN pH	MON MAX	MON MAX					
					47.4	44.9	7.7	7.3	7.7	7.3							
					MONTHLY INFL	MONTHLY EFFL	MAX pH	MIN pH	MAX pH	MIN pH	MON MAX	MON MAX					
					47.4	44.9	7.7	7.3	7.7	7.3							
					MONTHLY INFL	MONTHLY EFFL	MAX pH	MIN pH	MAX pH	MIN pH	MON MAX	MON MAX					
					47.4	44.9	7.7	7.3	7.7	7.3							
					MONTHLY INFL	MONTHLY EFFL	MAX pH	MIN pH	MAX pH	MIN pH	MON MAX	MON MAX					
					47.4	44.9	7.7	7.3	7.7	7.3							
					MONTHLY INFL	MONTHLY EFFL	MAX pH	MIN pH	MAX pH	MIN pH	MON MAX	MON MAX					
					47.4	44.9	7.7	7.3	7.7	7.3							
					MONTHLY INFL	MONTHLY EFFL	MAX pH	MIN pH	MAX pH	MIN pH	MON MAX	MON MAX					
					47.4	44.9	7.7	7.3	7.7	7.3							
					MONTHLY INFL	MONTHLY EFFL	MAX pH	MIN pH	MAX pH	MIN pH	MON MAX	MON MAX					
					47.4	44.9	7.7	7.3	7.7	7.3							
					MONTHLY INFL	MONTHLY EFFL	MAX pH	MIN pH	MAX pH	MIN pH	MON MAX	MON MAX					
					47.4	44.9	7.7	7.3	7.7	7.3							
					MONTHLY INFL	MONTHLY EFFL	MAX pH	MIN pH	MAX pH	MIN pH	MON MAX	MON MAX					
					47.4	44.9	7.7	7.3	7.7	7.3							
					MONTHLY INFL	MONTHLY EFFL	MAX pH	MIN pH	MAX pH	MIN pH	MON MAX	MON MAX					
					47.4	44.9	7.7	7.3	7.7	7.3							
					MONTHLY INFL	MONTHLY EFFL	MAX pH	MIN pH	MAX pH	MIN pH	MON MAX	MON MAX					
					47.4	44.9	7.7	7.3	7.7	7.3							
					MONTHLY INFL	MONTHLY EFFL	MAX pH	MIN pH	MAX pH	MIN pH	MON MAX	MON MAX					
					47.4	44.9	7.7	7.3	7.7	7.3							
					MONTHLY INFL	MONTHLY EFFL	MAX pH	MIN pH	MAX pH	MIN pH	MON MAX	MON MAX					
					47.4	44.9	7.7	7.3	7.7	7.3							
					MONTHLY INFL	MONTHLY EFFL	MAX pH	MIN pH	MAX pH	MIN pH	MON MAX	MON MAX					
					47.4	44.9	7.7	7.3	7.7	7.3							
					MONTHLY INFL	MONTHLY EFFL	MAX pH	MIN pH	MAX pH	MIN pH	MON MAX	MON MAX					
					47.4	44.9	7.7	7.3	7.7	7.3							
					MONTHLY INFL	MONTHLY EFFL	MAX pH	MIN pH	MAX pH	MIN pH	MON MAX	MON MAX					
					47.4	44.9	7.7	7.3	7.7	7.3							
					MONTHLY INFL	MONTHLY EFFL	MAX pH	MIN pH	MAX pH	MIN pH	MON MAX	MON MAX					
					47.4	44.9	7.7	7.3	7.7	7.3							
					MONTHLY INFL	MONTHLY EFFL	MAX pH	MIN pH	MAX pH	MIN pH	MON MAX	MON MAX					
					47.4	44.9	7.7	7.3	7.7	7.3							
					MONTHLY INFL	MONTHLY EFFL	MAX pH	MIN pH	MAX pH	MIN pH	MON MAX	MON MAX					
					47.4	44.9	7.7	7.3	7.7	7.3							
					MONTHLY INFL	MONTHLY EFFL	MAX pH	MIN pH	MAX pH	MIN pH	MON MAX	MON MAX					
					47.4	44.9	7.7	7.3	7.7	7.3							
					MONTHLY INFL	MONTHLY EFFL	MAX pH	MIN pH	MAX pH	MIN pH	MON MAX	MON MAX					
					47.4	44.9	7.7	7.3	7.7	7.3							
					MONTHLY INFL	MONTHLY EFFL	MAX pH	MIN pH	MAX pH	MIN pH	MON MAX	MON MAX					
					47.4	44.9	7.7	7.3	7.7	7.3							
					MONTHLY INFL	MONTHLY EFFL	MAX pH	MIN pH	MAX pH	MIN pH	MON MAX	MON MAX					
					47.4	44.9	7.7	7.3	7.7	7.3							
					MONTHLY INFL	MONTHLY EFFL	MAX pH	MIN pH	MAX pH	MIN pH	MON MAX	MON MAX					
					47.4	44.9	7.7	7.3	7.7	7.3							
					MONTHLY INFL	MONTHLY EFFL	MAX pH	MIN pH	MAX pH	MIN pH	MON MAX	MON MAX					
					47.4	44.9	7.7	7.3	7.7	7.3							
					MONTHLY INFL	MONTHLY EFFL	MAX pH	MIN pH	MAX pH	MIN pH	MON MAX	MON MAX					
					47.4	44.9	7.7	7.3	7.7	7.3							
					MONTHLY INFL	MONTHLY EFFL	MAX pH	MIN pH	MAX pH	MIN pH	MON MAX	MON MAX					
					47.4	44.9	7.7	7.3	7.7	7.3							
					MONTHLY INFL	MONTHLY EFFL	MAX pH	MIN pH	MAX pH	MIN pH	MON MAX	MON MAX					
					47.4	44.9	7.7	7.3	7.7	7.3							
					MONTHLY INFL	MONTHLY EFFL	MAX pH	MIN pH	MAX pH	MIN pH	MON MAX	MON MAX					
					47.4	44.9	7.7	7.3	7.7	7.3							
					MONTHLY INFL	MONTHLY EFFL	MAX pH	MIN pH	MAX pH	MIN pH	MON MAX	MON MAX					
					47.4	44.9	7.7	7.3	7.7	7.3							
					MONTHLY INFL	MONTHLY EFFL	MAX pH	MIN pH	MAX pH	MIN pH	MON MAX	MON MAX					
					47.4	44.9	7.7	7.3	7.7	7.3							
					MONTHLY INFL	MONTHLY EFFL	MAX pH	MIN pH	MAX pH	MIN pH	MON MAX	MON MAX					

OYSTER BAY STP FACILITY OPERATION REPORT PAGE 1 CALCULATIONS
 NY0021822

DAY	DATE	PRECIP IN/DAY	VOLUME OF SEWAGE TREATED		D.O. EFFL	TEMPERATURE (F)		pH (S.U.)		SET SOLIDS (ML/L)		CBOD ₅ (MG/L)		TSS (MG/L)		TOTAL NITROGEN	
			INST MIN	DAILY AVG		INST MAX	INFL	EFFL	INFL	EFFL	INFL	EFFL	INFL	EFFL	INFL	EFFL	INFL
TUES	5/1/2018	0		0.989	9.4	54.0	51.0	7.4	7.6								
WED	5/2/2018	0		0.9680	9.7	57.0	53.0	7.5	7.6								
THURS	5/3/2018	0		1.0160	9.9	58.0	55.0	7.5	7.6					74	4.8		8.90
FRI	5/4/2018	0		0.9840	10.1	59.0	56.0	7.5	7.6								
SAT	5/5/2018	0		1.0980	9.7	57.0	53.0	7.5	7.6								
SUN	5/6/2018	0		1.1110	10.1	59.0	56.0	7.5	7.6								
MON	5/7/2018	0		0.9360													
TUES	5/8/2018	0		0.9480	9.9	59.0	56.0	7.5	7.6								
WED	5/9/2018	0		0.9770	9.8	58.0	54.0	7.5	7.6								
THURS	5/10/2018	0		1.0240	9.9	58.0	56.0	7.5	7.6					112	4		7.90
FRI	5/11/2018	0		0.9870	9.6	60.0	56.0	7.2	7.5								
SAT	5/12/2018	0.2		1.0900	9.4	60.0	56.0	7.2	7.5								
SUN	5/13/2018	0.2		1.9730	9.6	58.0	54.0	7.5	7.6								
MON	5/14/2018	0		0.9520	8	55.0	52.0	7.1	7.3								
TUES	5/15/2018	0.4		1.0110	8.6	57.0	54.0	7.1	7.3								
WED	5/16/2018	0.6		0.9920	8.9	58.0	55.0	7.1	7.4								
THURS	5/17/2018	0.3		1.0920	9.5	57.0	54.0	7.2	7.3					148	4		2.30
FRI	5/18/2018	0		0.0240	9	59.0	56.0	7.2	7.3								
SAT	5/19/2018	0.7		1.0030	9.4	58.0	56.0	7.2	7.3								
SUN	5/20/2018	0		1.0720	9	59.0	56.0	7.2	7.3								
MON	5/21/2018	0		1.0660	8.9	60.0	56.0	3.8	3.8								
TUES	5/22/2018	0.3		0.9990	9.2	61.0	57.0	7.1	7.8								
WED	5/23/2018	0		1.0500	8.9	60.0	56.0	7.1	7.2								
THURS	5/24/2018	0		0.9330	9.4	61.0	57.0	7.1	7.3					156	5.2		4.40
FRI	5/25/2018	0		1.0850	9.5	61.0	57.0	7.1	7.1								
SAT	5/26/2018	0		0.9210	9.1	62.0	59.0	7.1	7.2								
SUN	5/27/2018	0		0.9070													
MON	5/28/2018	0		1.1430	9.3	60.0	59.0	7.1	7.2								
TUES	5/29/2018	0		1.0580	8.9	61.0	57.0	7.1	7.3								
WED	5/30/2018	0		1.0320	9.2	62.0	58.0	7.1	7.2								
THURS	5/31/2018	0		0.9460	9.6	62.0	58.0	7.2	7.4					194	4		4.70
		2.70		1.0131	9.4	59.1	55.8	7.5	7.8	0							
		TOTAL PRECIP		MONTHLY AVG	MONTHLY AVG	MONTHLY INFL	MONTHLY EFFL	MAX pH MIN pH	MAX pH MIN pH	MON MAX	MON MAX	TOTAL NITROGEN INFLUENT	TOTAL NITROGEN EFFLUENT	lbs/day	lbs/day		

GRIT REMOVAL FROM PLANT AMOUNT	=	YARDS
SCREENINGS REMOVAL FROM PLANT AMOUNT	=	279.0 CUBIC FEET
MAX TEMPERATURE (F)	=	59.0

OYSTER BAY STP FACILITY OPERATION REPORT PAGE 1 CALCULATIONS
 NY0021822

DAY	DATE	PRECIP IN/DAY	VOLUME OF SEWAGE TREATED		D.O. EFFL	TEMPERATURE(F)		pH (S.U.)		SET SOLIDS (ML/L)		CBOD ₅ (MGL)		TSS (MGL)		TOTAL NITROGEN		
			INST MIN	DAILY AVG		INST MAX	EFFL	INFL	EFFL	INFL	EFFL	INFL	EFFL	INFL	EFFL	INFL	EFFL	INFL
WED	8/1/2018	0		1.014	8.8	64.0	64.0	7.3	7.5	0.1								
THURS	8/2/2018	0		1.041	9	66.0	65.0	7.2	7.4	0.1		116		158	4	30.8	4.20	
FRI	8/3/2018	0		1.0310	9.6	68.0	66.0	7.3	7.5	0.1								
SAT	8/4/2018	0.3		0.9690	9	66.0	65.0	7.2	7.4	0.1								
SUN	8/5/2018	0		1.0660	8.6	68.0	66.0	7.3	7.5	0.1								
MON	8/6/2018	0		0.9970	6.4	67.0	65.0	7.3	7.5	0.1								
TUES	8/7/2018	0.4		0.9390	8.4	68.0	67.0	7.3	7.5	0.1								
WED	8/8/2018	0.2		0.9240	8.4	68.0	67.0	7.3	7.5	0.1								
THURS	8/9/2018	0.25		1.0100	9.1	68.0	67.0	7.3	7.5	0.1		136		154	4.4	31.3	5.80	
FRI	8/10/2018	0		0.9230	9.4	67.0	66.0	7.3	7.5	0.1								
SAT	8/11/2018	1.8		0.9070	9.1	67.0	66.0	7.3	7.5	0.1								
SUN	8/12/2018	0		1.0840	9.1	68.0	67.0	7.3	7.4	0.1								
MON	8/13/2018	0.7		1.0220	8.8	64.0	62.0	7.2	7.5	0.1								
TUES	8/14/2018	0.3		1.1600	8.6	66.0	64.0	7.3	7.4	0.1								
WED	8/15/2018	0		1.0960	8.9	66.0	64.0	7.2	7.3	0.1								
THURS	8/16/2018	0		1.0790	9.4	67.0	65.0	7.3	7.4	0.1		125		98	4	29.7	5.40	
FRI	8/17/2018	0.1		1.0600	8.8	65.0	63.0	7.4	7.5	0.1								
SAT	8/18/2018	0.8		1.1260	8.9	66.0	64.0	7.2	7.3	0.1								
SUN	8/19/2018	0.1		1.0870	8.9	65.0	64.0	7.2	7.3	0.1								
MON	8/20/2018	0		1.1040	8.6	66.0	64.0	7.3	7.3	0.1								
TUES	8/21/2018	0		1.0400	9.1	67.0	65.0	7.3	7.4	0.1								
WED	8/22/2018	0		0.9980	8.8	67.0	65.0	7.2	7.5	0.1								
THURS	8/23/2018	0		1.0170	8.8	68.0	66.0	7.3	7.5	0.1		139		148	4	25.8	5.50	
FRI	8/24/2018	0		0.9540	8.1	67.0	65.0	7.2	7.4	0.1								
SAT	8/25/2018	0		0.8650	8.6	67.0	65.0	7.2	7.5	0.1								
SUN	8/26/2018	0		0.9490	8.4	68.0	65.0	7.3	7.5	0.1								
MON	8/27/2018	0		0.9920	9	66.0	64.0	7.4	7.5	0.1								
TUES	8/28/2018	0		1.0390	9.4	69.0	66.0	7.4	7.4	0.1								
WED	8/29/2018	0		0.9980	9	71.0	67.0	7.3	7.5	0.1								
THURS	8/30/2018	0		1.0090	8.8	72.0	68.0	7.3	7.4	0.1		189		230	4	37.6	4.60	
FRI	8/31/2018	0		0.9820	8.6	71.0	68.0	7.3	7.4	0.1								
		4.95		1.0155	8.8	67.3	65.4	7.4	7.4	0								
		TOTAL		MONTHLY	MONTHLY	MONTHLY	MONTHLY	MAX pH	MAX pH	MON MAX						TOTAL NITROGEN	TOTAL NITROGEN	
		PRECIP		AVG	AVG	AVG	EFFL	MIN pH	MIN pH	MON MAX						INFLUENT	EFFLUENT	lbs/day
																		44.0

GRIT REMOVAL FROM PLANT	
AMOUNT	YARDS
SCREENINGS REMOVAL FROM PLANT	
AMOUNT	279.0 CUBIC FEET
MAX TEMPERATURE (F)	68.0

OYSTER BAY STP FACILITY OPERATION REPORT PAGE 1 CALCULATIONS
 NY0021822

DAY	DATE	PRECIP IN/DAY	VOLUME OF SEWAGE TREATED		D.O.		TEMPERATURE(F)		pH (S.U.)		SET SOLIDS (ML/L)		CBOD ₅ (MG/L)		TSS (MG/L)		TOTAL NITROGEN		
			INST MIN	DAILY AVG	INST MAX	EFFL	INFL	EFFL	INFL	EFFL	INFL	EFFL	INFL MAX	EFFL MAX	INFL	EFFL	INFL	EFFL	INFLUENT (mg/l)
SAT	9/1/2018	0		0.991		8.6	70.0	68.0	7.3	7.5									
SUN	9/2/2018	0		1.0050		8.6	70.0	68.0	7.3	7.5									
MON	9/3/2018	0		0.9830		8.4	71.0	69.0	7.3	7.4									
TUES	9/4/2018	0		0.9350		8.2	71.0	68.0	7.2	7.4									
WED	9/5/2018	0		0.9240		8.4	72.0	68.0	7.3	7.5									
THURS	9/6/2018	1.1		0.9180		9.4	72.0	69.0	7.2	7.4			115		2	118	4	29.7	4.70
FRI	9/7/2018	0		1.0020		9	71.0	68.0	7.2	7.4									
SAT	9/8/2018	0		0.9120		8.7	70.0	68.0	7.3	7.5									
SUN	9/9/2018	0.2		0.9640		8.2	71.0	68.0	7.2	7.4									
MON	9/10/2018	1.3		0.9790		8.6	68.0	66.0	7.3	7.4									
TUES	9/11/2018	0		1.2030		9.1	68.0	63.0	7.4	7.8									
WED	9/12/2018	0.4		1.0950		9	66.0	64.0	7.5	7.4									
THURS	9/13/2018	0		1.1630		7.7	66.0	64.0	7.5	7.4					2	98	4	23.6	3.50
FRI	9/14/2018	0		1.1350		8.4	66.0	63.0	7.4	7.6									
SAT	9/15/2018	0		1.0160		9	66.0	64.0	7.5	7.4									
SUN	9/16/2018	0		1.0780		8.4	66.0	64.0	7.4	7.6									
MON	9/17/2018	0		1.0620		9	67.0	65.0	7.4	7.8									
TUES	9/18/2018	0.8		0.9980		8.7	67.0	65.0	7.7	7.7									
WED	9/19/2018	0		1.0200		7.9	67.0	65.0	7.5	7.5									
THURS	9/20/2018	0		0.9900		8.2	66.0	65.0	7.5	7.6					2	120	6.4	30.4	3.80
FRI	9/21/2018	0		1.0110		8.4	66.0	63.0	7.5	7.6									
SAT	9/22/2018	0		0.9740		9.2	66.0	63.0	7.4	7.5									
SUN	9/23/2018	0		0.9590		8.9	68.0	64.0	7.5	7.5									
MON	9/24/2018	0.7		0.9620		8.8	68.0	64.0	7.5	7.7									
TUES	9/25/2018	0.5		1.0700		9.3	65.0	63.0	7.5	7.7									
WED	9/26/2018	0		1.1060		9.1	65.0	63.0	7.3	7.7									
THURS	9/27/2018	0		1.0940		9.2	66.0	64.0	7.4	7.6									
FRI	9/28/2018	1.3		1.0660		8.8	65.0	63.0	7.4	7.5					2	98	4	28.4	4.10
SAT	9/29/2018	0		1.0900		8.6	65.0	63.0	7.4	7.6									
SUN	9/30/2018	0		1.1870		9.4	65.0	63.0	7.4	7.5									
		6.30				8.7	67.6	65.1	7.7	7.8									
		TOTAL		1.0297		MONTHLY	AVG	MONTHLY	AVG	MONTHLY	AVG	MON MAX	MON MAX					TOTAL NITROGEN	
		PRECIP		AVG		AVG	INFL	EFFL	MAX pH	MAX pH	MIN pH	MIN pH	MIN pH					INFLUENT	EFFLUENT
									7.2	7.4								241.7	34.5
																		lbs/day	lbs/day

GRIT REMOVAL FROM PLANT	
AMOUNT	YARDS
SCREENINGS REMOVAL FROM PLANT	
AMOUNT	270.0 CUBIC FEET
MAX TEMPERATURE (F)	69.0

OYSTER BAY STP FACILITY OPERATION REPORT PAGE 1 CALCULATIONS
 NY0021822

DAY	DATE	PRECIP IN/DAY	VOLUME OF SEWAGE TREATED		D.O.		TEMPERATURE (F)		pH (S.U.)		SET SOLIDS (ML/L)		CBOD ₅ (MG/L)		TSS (MG/L)		TOTAL NITROGEN		
			INST MIN	DAILY AVG	INST MAX	EFFL	INFL	EFFL	INFL	EFFL	INFL	EFFL	INFL	EFFL	INFL	EFFL	INFL	EFFL	INFL
SAT	12/1/2018	0.1	1.091			9	47.0	49.0	7.3	7.4									
SUN	12/2/2018	1.2	1.1350			9	47.0	48.0	7.2	7.5									
MON	12/3/2018	0	1.2240			8.9	48.0	46.0	7.3	7.4									
TUES	12/4/2018	0	1.0770			8.4	47.0	45.0	7.3	7.5									
WED	12/5/2018	0	1.0610			9	46.0	44.0	7.4	7.5									
THURS	12/6/2018	0	1.1130			10.8	46.0	44.0	7.5	7.5			88.4	2	136	2.8		25.5	3.70
FRI	12/7/2018	0	0.9730			9.9	48.0	46.0	7.3	7.5									
SAT	12/8/2018	0	0.9980			8.4	47.0	45.0	7.3	7.4									
SUN	12/9/2018	0	1.0790			10.8	46.0	44.0	7.5	7.5									
MON	12/10/2018	0	0.9370			10.7	45.0	43.0	7.4	7.5									
TUES	12/11/2018	0	0.9500			9.4	46.0	44.0	7.4	7.5									
WED	12/12/2018	0	0.9970			9.8	45.0	43.0	7.3	7.5									
THURS	12/13/2018	0	1.0220			9.2	45.0	43.0	7.4	7.5			92.4	2	94	2		22.6	3.20
FRI	12/14/2018	0.1	0.9540			8.8	46.0	44.0	7.3	7.5									
SAT	12/15/2018	0	1.0060			9.6	46.0	45.0	7.3	7.4									
SUN	12/16/2018	1.6	1.1060			8.8	46.0	44.0	7.3	7.5									
MON	12/17/2018	0	1.0580			9	46.0	44.0	7.3	7.4									
TUES	12/18/2018	0	1.0810			8.6	45.0	43.0	7.3	7.5									
WED	12/19/2018	0	1.0330			3.4	46.0	44.0	7.3	7.5									
THURS	12/20/2018	0.2	1.0310			7.7	45.0	44.0	7.3	7.4			85.4	2	94	3.6		27.0	3.80
FRI	12/21/2018	2	1.0610			6.9	46.0	45.0	7.2	7.3									
SAT	12/22/2018	0	1.3020			6.1	46.0	45.0	7.2	7.4									
SUN	12/23/2018	0	1.2790			6.4	45.0	43.0	7.3	7.4									
MON	12/24/2018	0.1	1.1970			6.5	45.0	43.0	7.4	7.5									
TUES	12/25/2018	0	1.1160			8.4	46.0	44.0	7.4	7.4									
WED	12/26/2018	0	1.0630			9.8	46.0	44.0	7.3	7.3									
THURS	12/27/2018	0	1.0600			8.7	45.0	43.0	7.3	7.5			108	2	100	2		24.3	2.80
FRI	12/28/2018	1.1	1.0450			9	46.0	45.0	7.2	7.3									
SAT	12/29/2018	0	1.1680			7.4	47.0	45.0	7.3	7.4									
SUN	12/30/2018	0	1.1660			8.4	47.0	44.0	7.4	7.4									
MON	12/31/2018	1.1	1.0720			11.1	47.0	45.0	7.4	7.4									
		7.50	1.0792			8.6	46.0	44.3	7.5	7.5									
		TOTAL PRECIP	MONTHLY AVG			MONTHLY AVG	MONTHLY INFL	MONTHLY EFFL	MAX pH	MAX pH	MON MAX	MON MAX						TOTAL NITROGEN INFLUENT	TOTAL NITROGEN EFFLUENT
									7.2	7.3								266.7	29.8
									MIN pH	MIN pH								lbs/day	lbs/day

GRIT REMOVAL FROM PLANT AMOUNT	YARDS
SCREENINGS REMOVAL FROM PLANT AMOUNT	279.0 CUBIC FEET
MAX TEMPERATURE (F)	49.0

OYSTER BAY STP FACILITY OPERATION REPORT PAGE 1 CALCULATIONS
 NY0021822

DAY	DATE	PRECIP IN/DAY	VOLUME OF SEWAGE TREATED		D.O. EFFL	TEMPERATURE(F)		pH (S.U.)		SET SOLIDS (ML/L)		CBOD ₅ (MG/L)		TSS (MG/L)		TOTAL NITROGEN	
			INST MIN	DAILY AVG		INST MAX	INFL	EFFL	INFL	EFFL	INFL	EFFL	INFL	EFFL	INFL	EFFL	INFL
TUES	1/1/2019	0.4	1.118		8.9	47.0	45.0	7.2	7.4								
WED	1/2/2019	0	1.3310		9.1	50.0	47.0	7.3	7.5								
THURS	1/3/2019	0	1.1730		9.9	48.0	46.0	7.3	7.4			101		110	4	26.5	2.90
FRI	1/4/2019	0	1.1530		7.8	48.0	46.0	7.2	7.4								
SAT	1/5/2019	0.7	1.0320		8	48.0	46.0	7.2	7.4								
SUN	1/6/2019	0	1.2380		7.8	48.0	46.0	7.2	7.4								
MON	1/7/2019	0	1.1050		11.3	47.0	45.0	7.4	7.4								
TUES	1/8/2019	0	1.1080		11	49.0	47.0	7.3	7.4								
WED	1/9/2019	0	1.0690		9.9	49.0	47.0	7.3	7.5								
THURS	1/10/2019	0	1.0640		9.9	49.0	47.0	7.3	7.5			126		4.7	3.6	20.2	3.10
FRI	1/11/2019	0	1.0030		9.1	48.0	46.0	7.3	7.4								
SAT	1/12/2019	0	0.9900		9.4	48.0	46.0	7.3	7.5								
SUN	1/13/2019	0	1.0320		9.6	47.0	45.0	7.3	7.5								
MON	1/14/2019	0	1.0580		11.6	47.0	45.0	7.3	7.4								
TUES	1/15/2019	0	0.9880		10.2	47.0	45.0	7.3	7.5								
WED	1/16/2019	0	1.0350		9.6	48.0	46.0	7.2	7.3								
THURS	1/17/2019	0	0.9910		9.4	48.0	45.0	7.3	7.4			128		2	108	2	32.6
FRI	1/18/2019	0.1	1.0020		9.9	50.0	47.0	7.2	7.4								
SAT	1/19/2019	0.2	0.9570		10.2	47.0	45.0	7.3	7.5								
SUN	1/20/2019	1.7	1.0590		9.9	48.0	46.0	7.2	7.4								
MON	1/21/2019	0	1.1340		9.9	48.0	46.0	7.3	7.4								
TUES	1/22/2019	0	1.0950		9.9	49.0	47.0	7.3	7.4								
WED	1/23/2019	0	1.0410		9.5	49.0	46.0	7.2	7.4								
THURS	1/24/2019	3.2	1.0300		9.4	50.0	48.0	7.3	7.4			104		2	106	2.8	36.8
FRI	1/25/2019	0	1.2120		9.1	52.0	50.0	7.2	7.4								
SAT	1/26/2019	0	1.1570		8.9	51.0	49.0	7.3	7.5								
SUN	1/27/2019	0	1.1420		9.4	50.0	48.0	7.3	7.4								
MON	1/28/2019	0	1.1270		11.6	48.0	46.0	7.3	7.3								
TUES	1/29/2019	0.3	1.1080		9.9	50.0	48.0	7.3	7.5								
WED	1/30/2019	0	1.0890		9.9	49.0	47.0	7.2	7.4								
THURS	1/31/2019	0	1.0600		8.9	48.0	46.0	7.3	7.5			119		2	110	4.4	28.9
		6.60	1.0875		9.7	47.6	46.5	7.4	7.5								
		TOTAL PRECIP	MONTHLY AVG		MONTHLY AVG	MONTHLY INFL	MONTHLY EFFL	MONTHLY MAX pH	MONTHLY MIN pH	MONTHLY MAX pH	MONTHLY MIN pH	MON MAX	MON MAX	TOTAL NITROGEN INFLUENT	TOTAL NITROGEN EFFLUENT	TOTAL NITROGEN INFLUENT	TOTAL NITROGEN EFFLUENT
														253.7	27.4	253.7	27.4
														lbs/day	lbs/day	lbs/day	lbs/day

GRIT REMOVAL FROM PLANT AMOUNT	YARDS
SCREENINGS REMOVAL FROM PLANT AMOUNT	279.0 CUBIC FEET
MAX TEMPERATURE (F)	50.0

OYSTER BAY STP FACILITY OPERATION REPORT PAGE 1 CALCULATIONS
 NY0021822

DAY	DATE	PRECIP IN/DAY	VOLUME OF SEWAGE TREATED		D.O.	TEMPERATURE(F)		pH (S.U.)		SET SOLIDS (ML/L)		CBOD ₅ (MG/L)		TSS (MG/L)		TOTAL NITROGEN		
			INST MIN	DAILY AVG		INST MAX	INFL	EFFL	INFL	EFFL	INFL	EFFL	INFL	EFFL	INFL	EFFL	INFL	EFFL
MON	4/1/2019	0		1.049	11.2	55.0	53.0	7.2	7.0									
TUES	4/2/2019	0		1.0380	10.2	56.0	54.0	7.2	7.3									
WED	4/3/2019	0.1		0.9860	9.6	56.0	54.0	7.2	7.2									
THURS	4/4/2019	0		1.0040	9.9	57.0	54.0	7.2	7.3			201	2.6	168	5.5	24.3	4.60	
FRI	4/5/2019	0.1		1.0220	8.9	56.0	53.0	6.9	6.6									
SAT	4/6/2019	0		0.9580	9.1	56.0	53.0	7.0	6.9									
SUN	4/7/2019	0		0.9840	11.2	55.0	53.0	7.2	7.0									
MON	4/8/2019	0		1.1020	10.7	54.0	52.0	6.9	7.0									
TUES	4/9/2019	0.1		1.0580	9.9	56.0	54.0	7.0	7.0									
WED	4/10/2019	0		0.9960	9.9	57.0	54.0	7.1	6.7									
THURS	4/11/2019	0		1.1110	9.6	56.0	54.0	7.0	7.0			146	15.5	104	5	30.0	4.60	
FRI	4/12/2019	0.2		0.9960	8.2	56.0	54.0	7.1	6.7									
SAT	4/13/2019	0.7		1.0550	9	57.0	55.0	7.0	6.8									
SUN	4/14/2019	0		1.1490	8.2	56.0	54.0	7.1	6.7									
MON	4/15/2019	0.6		1.1490	7.4	55.0	53.0	6.9	6.9									
TUES	4/16/2019	0		1.0990	10.9	55.0	53.0	7.1	6.7									
WED	4/17/2019	0		1.0540	9.7	56.0	54.0	7.1	6.8									
THURS	4/18/2019	0		1.0850	10.6	59.0	56.0	7.3	7.0			100	2.5	118	4.5	29.9	2.60	
FRI	4/19/2019	0		1.0430	9.9	59.0	56.0	7.2	7.0									
SAT	4/20/2019	1		1.0110	10.6	59.0	56.0	7.3	7.0									
SUN	4/21/2019	0.1		1.1660	10.9	55.0	53.0	7.1	6.7									
MON	4/22/2019	0		1.1400	9.8	58.0	55.0	7.0	6.9									
TUES	4/23/2019	0.7		1.1890	9.9	59.0	56.0	7.1	6.9									
WED	4/24/2019	0		1.1050	9.9	59.0	57.0	7.1	6.9									
THURS	4/25/2019	0		1.1270	8.4	60.0	58.0	7.0	7.0			104	2.4	152	3.6	24.0	1.70	
FRI	4/26/2019	1		1.1270	8.9	58.0	57.0	7.1	7.0									
SAT	4/27/2019	0.1		1.1680	9.1	57.0	56.0	7.1	7.0									
SUN	4/28/2019	0		1.3020	8.1	57.0	56.0	7.1	7.0									
MON	10/29/2018	0		1.1440	8.5	55.0	53.0	7.1	6.8									
TUES	10/30/2018	0.2		1.1840	8.6	55.0	53.0	7.0	6.9									
		4.90		1.0867	9.5	56.7	54.5	7.3	7.3									
		TOTAL PRECIP		MONTHLY AVG	MONTHLY AVG	MONTHLY INFL	MONTHLY EFFL	MAX pH 6.9	MAX pH 6.6	MON MAX	MON MAX					TOTAL NITROGEN FWA INFLUENT	TOTAL NITROGEN FWA EFFLUENT	lbs/day 30.3

GRIT REMOVAL FROM PLANT AMOUNT	YARDS
SCREENINGS REMOVAL FROM PLANT AMOUNT	270.0 CUBIC FEET
MAX TEMPERATURE (F)	58.0

OYSTER BAY STP FACILITY OPERATION REPORT PAGE 1 CALCULATIONS
 NY0021822

DAY	DATE	PRECIP IN/DAY	VOLUME OF SEWAGE TREATED		D.O.	TEMPERATURE(F)		pH (S.U.)		SET SOLIDS (ML/L)		CBOD ₅ (MG/L)		TSS (MG/L)		TOTAL NITROGEN	
			INST MIN	DAILY AVG		INST MAX	INFL	EFFL	INFL	EFFL	INFL	EFFL	INFL	EFFL	INFL	EFFL	INFL
WED	5/1/2019	0		1.057	8.6	54.0	52.0	7.1	7.0								
THURS	5/2/2019	0		1.0860	8.6	54.0	52.0	7.2	7.2			134	4	134	3.2	20.2	4.00
FRI	5/3/2019	0		1.0950	8.3	54.0	52.0	7.2	7.3								
SAT	5/4/2019	0.1		1.0720	8.6	54.0	52.0	7.1	7.0								
SUN	5/5/2019	0.1		1.1680	8.6	54.0	52.0	7.2	7.2								
MON	5/6/2019	1.2		1.1490	8.2	52.0	52.0	6.8	6.8								
TUES	5/7/2019	0.1		1.2120	8.5	54.0	52.0	7.1	7.2								
WED	5/8/2019	0		1.1320	8	58.0	56.0	7.1	7.1								
THURS	5/9/2019	0		1.1320	9.9	58.0	56.0	7.1	7.0			98.2	2	150	5	22.0	3.70
FRI	5/10/2019	0		1.1120	10.2	57.0	57.0	7.0	7.1								
SAT	5/11/2019	0		1.2100	9.9	57.0	56.0	7.1	7.0								
SUN	5/12/2019	1.5		1.2450	9.9	58.0	56.0	7.1	7.0								
MON	5/13/2019	0.7		1.0740	10.4	46.0	46.0	7.1	7.0								
TUES	5/14/2019	0.1		1.2640	9.9	56.0	53.0	7.0	7.1								
WED	5/15/2019	0		1.2480	9.9	57.0	55.0	7.0	7.1								
THURS	5/16/2019	0		1.2050	9.6	58.0	56.0	7.1	7.3			120	2.3	256	3.6	26.6	2.90
FRI	5/17/2019	0		1.1320	9.4	58.0	56.0	7.1	7.2								
SAT	5/18/2019	0		1.1470	9.6	58.0	56.0	7.1	7.3								
SUN	5/19/2019	0		1.1510	9.5	73.0	71.0	7.3	7.3								
MON	5/20/2019	0.1		1.1500	9.8	75.0	75.0	7.0	7.0								
TUES	5/21/2019	0		1.1470	9.9	57.0	57.0	7.1	7.2								
WED	5/22/2019	0		1.1220	9.1	60.0	57.0	7.1	7.3								
THURS	5/23/2019	0.1		1.0630	8.9	65.0	62.0	7.1	7.2			119	2	200	2	30.1	3.30
FRI	5/24/2019	0		1.1050	8.2	66.0	63.0	7.0	7.2								
SAT	5/25/2019	0		1.0350	8.6	67.0	64.0	7.1	7.3								
SUN	5/26/2019	0		1.0640	8.9	65.0	62.0	7.1	7.2								
MON	5/27/2019	0		1.0850	9	66.0	64.0	7.1	7.2								
TUES	5/28/2019	0		1.0740	9.9	66.0	63.0	7.1	7.3								
WED	5/29/2019	0.5		1.0550	9.1	65.0	63.0	7.1	7.2								
THURS	5/30/2019	1.1		1.0970	8.4	65.0	63.0	7.1	7.3			91.4	4.2	114	2	23.0	3.10
FRI	5/31/2019	0		1.1820	9.6	65.0	63.0	7.1	7.2								
		5.60		1.1313	9.2	60.0	58.1	7.3	7.3	0							
		TOTAL PRECIP		MONTHLY AVG	MONTHLY AVG	MONTHLY INFL	MONTHLY EFFL	MAX pH 6.8	MAX pH 6.8	MON MAX	MON MAX	TOTAL NITROGEN INFLUENT	TOTAL NITROGEN EFFLUENT	FWA EFFLUENT		226.3	28.9
																lbs/day	lbs/day

GRIT REMOVAL FROM PLANT AMOUNT	YARDS
SCREENINGS REMOVAL FROM PLANT AMOUNT	279.0 CUBIC FEET
MAX TEMPERATURE (F)	75.0

OYSTER BAY STP FACILITY OPERATION REPORT PAGE 1 CALCULATIONS
 NY0021822

DAY	DATE	PRECIP IN/DAY	VOLUME OF SEWAGE TREATED		D.O. EFFL	TEMPERATURE(F)		PH(S.U.)		SET SOLIDS (ML/L)		CBOD ₅ (MGL)		TSS (MGL)		TOTAL NITROGEN	
			INST MIN	DAILY AVG		INST MAX	INFL	EFFL	INFL	EFFL	INFL	EFFL	INFL MAX	EFFL MAX	INFL	EFFL	INFL
THURS	8/1/2019	0	1.105		9	72.0	70.0	7.1	7.2			91.7	4	122	3.1	217	3.10
FRI	8/2/2019	0	1.0880		8.9	72.0	70.0	7.1	7.3								
SAT	8/3/2019	0	0.9940		9	72.0	70.0	7.1	7.2								
SUN	8/4/2019	0	1.0850		9	72.0	70.0	7.1	7.2								
MON	8/5/2019	0	1.0800		8.8	70.0	68.0	7.1	7.1								
TUES	8/6/2019	0	1.1220		8.9	71.0	69.0	7.1	7.2								
WED	8/7/2019	0.3	1.1070		8.6	70.0	68.0	7.1	7.3								
THURS	8/8/2019	0	1.1070		8.4	70.0	68.0	7.1	7.2			94.1	2	144	3.2	25.7	3.10
FRI	8/9/2019	0	1.1040		9.1	71.0	69.0	7.1	7.2								
SAT	8/10/2019	0	1.0360		8.9	71.0	69.0	7.1	7.2								
SUN	8/11/2019	0	1.0570		8.6	70.0	68.0	7.1	7.3								
MON	8/12/2019	0	1.0750		9	70.0	68.0	7.1	7.2								
TUES	8/13/2019	0.1	1.0110		8.4	70.0	68.0	7.1	7.2								
WED	8/14/2019	0	1.0450		8.6	70.0	68.0	7.1	7.2								
THURS	8/15/2019	0	1.0400		8.4	70.0	68.0	7.1	7.3			85.2	2.8	112	2.8	19.7	2.80
FRI	8/16/2019	0	1.0150		8.1	70.0	68.0	7.1	7.2								
SAT	8/17/2019	0	1.0230		8.4	70.0	68.0	7.1	7.2								
SUN	8/18/2019	0.5	1.0290		8.6	70.0	69.0	7.1	7.3								
MON	8/19/2019	0.2	1.0270		8.9	70.0	68.0	6.9	7.1								
TUES	8/20/2019	0	1.0400		9	70.0	68.0	7.0	7.1								
WED	8/21/2019	0.2	1.0600		9.4	70.0	69.0	7.1	7.2								
THURS	8/22/2019	0.7	1.0310		9.7	71.0	70.0	7.0	7.2			164	2	236	2.4	30.1	2.70
FRI	8/23/2019	0.2	1.1230		9.4	70.0	69.0	7.1	7.2								
SAT	8/24/2019	0	1.1020		9	70.0	68.0	7.0	7.1								
SUN	8/25/2019	0	1.0600		9.7	71.0	70.0	7.0	7.2								
MON	8/26/2019	0	1.0670		9.1	70.0	69.0	7.0	7.2								
TUES	8/27/2019	0	1.0610		8.9	70.0	69.0	7.1	7.2								
WED	8/28/2019	1.9	1.0300		9.4	69.0	68.0	7.0	7.2								
THURS	8/29/2019	0	1.2350		9.8	70.0	69.0	7.1	7.2								
FRI	8/30/2019	0	1.1680		9.4	70.0	69.0	7.1	7.2			82.1	2.3	82	2	17.3	3.20
SAT	8/31/2019	0	1.0730		9.1	70.0	69.0	7.0	7.1								
		4.10	1.0710		9.0	70.3	68.7	7.1	7.3								
		TOTAL PRECIP	MONTHLY AVG		MONTHLY AVG	MONTHLY INFL	MONTHLY EFFL	MAX pH	MAX pH	MON MAX	MON MAX					TOTAL NITROGEN INFLUENT	TOTAL NITROGEN EFFLUENT
								6.9	7.1							199.8	26.5
								MIN pH	MIN pH							lbs/day	lbs/day

GRIT REMOVAL FROM PLANT AMOUNT	YARDS
SCREENINGS REMOVAL FROM PLANT AMOUNT	279.0 CUBIC FEET
MAX TEMPERATURE (F)	70.0

OYSTER BAY STP FACILITY OPERATION REPORT PAGE 1 CALCULATIONS
 NY0021822

DAY	DATE	PRECIP IN/DAY	VOLUME OF SEWAGE TREATED		D.O. EFFL	TEMPERATURE (F)		pH (S.U.)		SET SOLIDS (ML/L)		CBOD ₅ (MG/L)		TSS (MG/L)		TOTAL NITROGEN		
			INST MIN	DAILY AVG		INST MAX	INFL	EFFL	INFL	EFFL	INFL	EFFL	INFL	EFFL	INFL	EFFL	INFL	EFFL
SUN	12/1/2019	0.8		0.394	9.2	58.0	56.0	7.1	7.2									
MON	12/2/2019	0.4		1.0950	9.1	58.0	56.0	7.2	7.2									
TUES	12/3/2019	0		1.0930	9.5	59.0	57.0	7.1	7.2									
WED	12/4/2019	0		1.0570	9.4	59.0	57.0	7.1	7.2									
THURS	12/5/2019	0		1.0300	9.8	60.0	58.0	7.1	7.2									
FRI	12/6/2019	0		1.0350	9.1	58.0	57.0	7.2	7.2			110	2.5	114	6.4	33.5	2.90	
SAT	12/7/2019	0		1.0280	9.1	58.0	56.0	7.2	7.2									
SUN	12/8/2019	0		0.9670	9.2	58.0	56.0	7.1	7.2									
MON	12/9/2019	2.1		0.9900	8.6	58.0	56.0	7.2	7.2									
TUES	12/10/2019	0.2		1.2870	8.9	58.0	56.0	6.9	7.0									
WED	12/11/2019	0.4		1.1980	9	58.0	56.0	7.1	7.1									
THURS	12/12/2019	0		1.1620	9.4	59.0	57.0	7.1	7.2			72	2	110	6.8	26.2	2.40	
FRI	12/13/2019	1		1.0830	9.1	58.0	56.0	7.1	7.2									
SAT	12/14/2019	2		1.0830	9.2	58.0	56.0	7.2	7.2									
SUN	12/15/2019	0		1.5840	9.1	58.0	56.0	7.2	7.2									
MON	12/16/2019	0.1		1.4400	10.8	56.0	54.0	7.0	7.0									
TUES	12/17/2019	1.1		1.2180	10.3	57.0	55.0	7.0	7.1									
WED	12/18/2019	0		1.3720	9.9	57.0	55.0	7.0	7.1			84	2	108	6	23.7	3.10	
THURS	12/19/2019	0		1.2620	9.3	56.0	54.0	7.0	7.1									
FRI	12/20/2019	0		1.7490	9.9	56.0	54.0	7.0	7.2									
SAT	12/21/2019	0		1.0780	9.9	56.0	54.0	7.1	7.2									
SUN	12/22/2019	0		1.1700	9.9	56.0	54.0	7.0	7.2									
MON	12/23/2019	0		1.1050	9.9	56.0	54.0	7.1	7.2									
TUES	12/24/2019	0		1.1800	9.9	56.0	54.0	7.1	7.2									
WED	12/25/2019	0		1.0280	9.3	56.0	54.0	7.0	7.2									
THURS	12/26/2019	0		1.1230	9.4	56.0	54.0	7.1	7.2									
FRI	12/27/2019	0		0.9910	9.6	57.0	55.0	7.1	7.2									
SAT	12/28/2019	0		1.0410	9.4	56.0	54.0	7.1	7.2			69.6	2	112	8.8	35.7	4.30	
SUN	12/29/2019	0		1.0540	9.9	56.0	54.0	7.1	7.2									
MON	12/30/2019	1.3		1.0820	9.9	56.0	54.0	7.1	7.2									
TUES	12/31/2019	0.1		1.1580	9.9	56.0	54.0	7.1	7.2									
		9.50		1.1335	MONTHLY AVG	57.2	55.3	7.2	7.2	0	0.1							
		TOTAL PRECIP		MONTHLY AVG	MONTHLY AVG	INFL MONTHLY AVG	EFFL MONTHLY AVG	MAX pH 6.9	MAX pH 7.0	MON MAX	MON MAX						TOTAL NITROGEN INFLUENT	TOTAL NITROGEN EFFLUENT
																	238.2	29.2
																	lbs/day	lbs/day

GRIT REMOVAL FROM PLANT AMOUNT	YARDS
SCREENINGS REMOVAL FROM PLANT AMOUNT	279.0 CUBIC FEET
MAX TEMPERATURE (F)	58.0

OYSTER BAY STP FACILITY OPERATION REPORT PAGE 1 CALCULATIONS
 NY0021822

DAY	DATE	PRECIP IN/DAY	VOLUME OF SEWAGE TREATED		D.O.	TEMPERATURE(F)		pH(S.U.)		SET SOLIDS (MUL)		CBOD ₅ (MG/L)		TSS (MG/L)		TOTAL NITROGEN		
			INST MIN	DAILY AVG		INST MAX	INFL	EFFL	INFL	EFFL	INFL	EFFL	INFL	EFFL	INFL	EFFL	INFL	EFFL
WED	4/1/2020	0		1.112	10.2	57.0	54.0	7.0	7.2									
THURS	4/2/2020	0		1.1210	9.9	57.0	54.0	7.0	7.1			65.6	2	92	6.4	37.6	3.20	
FRI	4/3/2020	0.4		0.9940	10.4	57.0	54.0	7.0	7.1									
SAT	4/4/2020	0		1.3210	10	57.0	54.0	7.0	7.1									
SUN	4/5/2020	0		1.1740	10.1	58.0	54.0	7.0	7.2									
MON	4/6/2020	0.4		1.1160	10.1	58.0	54.0	7.0	7.1									
TUES	4/7/2020	0		1.1790	10.1	58.0	54.0	7.0	7.1									
WED	4/8/2020	0.1		1.0810	10	58.0	54.0	7.0	7.1									
THURS	4/9/2020	0.3		1.0890	9.9	58.0	54.0	7.0	7.1			65.2	3	110	4	36.1	3.50	
FRI	4/10/2020	0		1.2120	10.1	58.0	55.0	7.0	7.1									
SAT	4/11/2020	0		0.9930	10	57.0	53.0	7.1	7.0									
SUN	4/12/2020	0		1.1800	10	58.0	54.0	7.0	7.0									
MON	4/13/2020	2		1.0410	10.3	56.0	54.0	7.0	7.1									
TUES	4/14/2020	0		1.3030	10.7	56.0	54.0	7.0	7.1									
WED	4/15/2020	0		1.2240	10.3	56.0	54.0	7.0	7.1									
THURS	4/16/2020	0		1.1550	10	56.0	54.0	7.1	7.2			63.2	3.1	94	5.2	18.9	5.20	
FRI	4/17/2020	0		1.2190	10.1	54.0	54.0	7.1	7.2									
SAT	4/18/2020	0.3		1.1160	10.4	57.0	54.0	7.1	7.1									
SUN	4/19/2020	0		1.2320	10.2	56.0	54.0	7.0	7.1									
MON	4/20/2020	0		1.1220	10.5	44.0	45.0	7.0	7.1									
TUES	4/21/2020	0.4		1.1700	10.4	53.0	53.0	7.0	7.1									
WED	4/22/2020	0		1.0580	10.2	45.0	55.0	7.1	7.2									
THURS	4/23/2020	0.1		1.1010	10.4	44.0	60.0	7.0	7.1			59.4	3.4	84	6.8	21.6	3.10	
FRI	4/24/2020	0.6		1.0400	10.5	58.0	56.0	7.0	7.1									
SAT	4/25/2020	0		1.1590	10.2	59.0	57.0	7.0	7.1									
SUN	4/26/2020	0.3		1.1940	10.4	44.0	60.0	7.0	7.1									
MON	4/27/2020	0.1		1.0210	9.8	53.0	51.0	7.1	7.1									
TUES	4/28/2020	0		1.1470	9.2	52.0	50.0	6.9	6.8									
WED	4/29/2020	0		1.1160	9.7	51.0	52.0	7.0	7.1									
THURS	4/30/2020	0.8		1.0560	9.9	61.0	59.0	7.0	7.1			56.7	3.1	54	6.8	32.5	3.40	
		5.80		1.1349	10.1	54.8	54.1	7.1	7.2									
		TOTAL PRECIP		MONTHLY AVG	MONTHLY AVG	MONTHLY INFL	MONTHLY EFFL	MAX pH 6.9	MAX pH 7.2	MON MAX	MON MAX	MON MAX	MON MAX	TOTAL NITROGEN INFLUENT	TOTAL NITROGEN EFFLUENT	TOTAL NITROGEN INFLUENT	TOTAL NITROGEN EFFLUENT	

GRIT REMOVAL FROM PLANT	YARDS
AMOUNT	270.0
SCREENINGS REMOVAL FROM PLANT	
AMOUNT	270.0
MAX TEMPERATURE (F)	60.0

OYSTER BAY STP FACILITY OPERATION REPORT PAGE 1 CALCULATIONS
 NY0021822

DAY	DATE	PRECIP IN/DAY	VOLUME OF SEWAGE TREATED			D.O. EFFL	TEMPERATURE (F)		pH (S.U.)		SET SOLIDS (ML/L)		CBOD ₅ (MG/L)		TSS (MG/L)		TOTAL NITROGEN	
			INST MIN	DAILY AVG	INST MAX		INFL	EFFL	INFL	EFFL	INFL	EFFL	INFL	EFFL	INFL	EFFL	INFL	EFFL
FRI	5/1/2020	0.2		1.15		9.8	62.0	59.0	7.0	7.1								
SAT	5/2/2020	0		1.1800		9.9	62.0	58.0	7.0	7.0								
SUN	5/3/2020	0		1.1160		9.8	63.0	59.0	7.0	7.1								
MON	5/4/2020	0.2		1.1430		9.9	62.0	60.0	7.0	7.1								
TUES	5/5/2020	0		1.1390		9.6	62.0	60.0	7.0	7.1								
WED	5/6/2020	0		1.1160		10.4	61.0	60.0	7.0	7.1								
THURS	5/7/2020	0		1.0700		10	62.0	59.0	7.0	7.1			76.4	3.3	60	6	27.9	2.70
FRI	5/8/2020	0.4		1.0770		9.8	61.0	59.0	6.9	6.9								
SAT	5/9/2020	0.3		1.1380		10	61.0	60.0	7.0	7.1								
SUN	5/10/2020	0		1.0710		10.4	61.0	60.0	7.0	7.1								
MON	5/11/2020	0.1		1.0780		9.7	60.0	58.0	7.0	7.1								
TUES	5/12/2020	0		1.0990		9.9	60.0	58.0	6.9	7.0								
WED	5/13/2020	0		1.0790		9.9	60.0	58.0	6.9	7.0								
THURS	5/14/2020	0		1.0350		9.6	60.0	58.0	6.9	7.0			72.9	2	88	4	20.4	2.20
FRI	5/15/2020	0		1.0240		9.4	62.0	58.0	6.9	7.0								
SAT	5/16/2020	0		0.9690		9.2	62.0	59.0	6.9	7.0								
SUN	5/17/2020	0		1.0140		9.9	60.0	58.0	6.9	7.0								
MON	5/18/2020	0		1.0940		10.2	60.0	58.0	7.0	7.0								
TUES	5/19/2020	0		1.0360		9.2	62.0	58.0	6.9	7.0								
WED	5/20/2020	0		1.0290		9.9	61.0	58.0	6.9	7.0								
THURS	5/21/2020	0		0.9950		9.8	61.0	58.0	6.9	7.1			95.7	3	134	5.6	31.1	3.70
FRI	5/22/2020	0		1.0260		9.9	62.0	58.0	7.0	7.1								
SAT	5/23/2020	0		1.0300		9.9	62.0	59.0	6.9	7.0								
SUN	5/24/2020	0		1.0290		9.9	61.0	58.0	6.9	7.0								
MON	5/25/2020	0		1.0340														
TUES	5/26/2020	0		1.0550		9.8	62.0	58.0	6.9	7.0								
WED	5/27/2020	0		1.0590		9.8	62.0	59.0	7.0	7.1								
THURS	5/28/2020	0		0.9690		9.9	63.0	59.0	7.0	7.1			91.6	2	110	4	38.7	3.80
FRI	5/29/2020	0		1.0660		9.4	63.0	59.0	6.9	7.1								
SAT	5/30/2020	0		0.9720		9.9	63.0	60.0	6.9	7.0								
SUN	5/31/2020	0		1.0050														
		1.20		1.0612		9.8	61.5	58.7	7.0	7.1								
		TOTAL PRECIP		MONTHLY AVG		MONTHLY AVG	INFL MONTHLY AVG	EFFL MONTHLY AVG	MAX pH 6.9	MIN pH 6.9	MON MAX	MON MAX	MON MAX	MON MAX	TOTAL NITROGEN INFLUENT	TOTAL NITROGEN EFFLUENT	TOTAL NITROGEN INFLUENT	TOTAL NITROGEN EFFLUENT
															247.9	26.1	247.9	26.1
															lbs/day	lbs/day	lbs/day	lbs/day

GRIT REMOVAL FROM PLANT AMOUNT	YARDS
SCREENINGS REMOVAL FROM PLANT AMOUNT	279.0
MAX TEMPERATURE (F)	160.0

OYSTER BAY STP FACILITY OPERATION REPORT PAGE 1 CALCULATIONS
 NY0021822

DAY	DATE	PRECIP IN/DAY	VOLUME OF SEWAGE TREATED		D.O. EFFL	TEMPERATURE (F)		pH (S.U.)		SET SOLIDS (ML/L)		CBOD ₅ (MG/L)		TSS (MG/L)		TOTAL NITROGEN	
			INST MIN	DAILY AVG		INST MAX	INFL	EFFL	INFL	EFFL	INFL	EFFL	INFL	EFFL	INFL	EFFL	INFL
MON	6/1/2020	0		1.027		62.0	61.0	6.9	7.0								
TUES	6/2/2020	0		1.0350	9.6	62.0	60.0	7.0	7.1								
WED	6/3/2020	0.5		0.9820	9.9	62.0	60.0	7.0	7.1								
THURS	6/4/2020	0		1.0380	9.8	62.0	60.0	6.9	7.0								
FRI	6/5/2020	0.3		1.0490	9.4	62.0	60.0	6.9	7.0					190	4	22.6	5.20
SAT	6/6/2020	0.4		1.0270	9.6	63.0	60.0	6.9	7.0								
SUN	6/7/2020	0		1.4860	9.9	62.0	60.0	7.0	7.0								
MON	6/8/2020	0		0.9270	9.9	64.0	62.0	7.0	7.1								
TUES	6/9/2020	0		1.0030	9.8	64.0	62.0	6.9	7.0								
WED	6/10/2020	0		0.9970	9.9	64.0	62.0	6.9	7.0								
THURS	6/11/2020	0.2		1.0210	9.7	64.0	62.0	6.9	7.1					118	2	29.4	3.90
FRI	6/12/2020	0		1.0650	9.8	64.0	62.0	7.0	7.1								
SAT	6/13/2020	0		0.9160	9.9	62.0	62.0	6.9	7.0								
SUN	6/14/2020	0		0.9680	9.8	62.0	61.0	6.9	7.0								
MON	6/15/2020	0		0.9880	9.7	62.0	60.0	6.9	7.0								
TUES	6/16/2020	0		0.9830	9.9	62.0	60.0	6.9	7.0								
WED	6/17/2020	0		1.0130	9.6	63.0	61.0	6.9	7.0								
THURS	6/18/2020	0		1.0010	9.9	63.0	61.0	6.9	7.0					112	2	25.6	3.20
FRI	6/19/2020	0		0.9490	9.4	64.0	61.0	7.0	7.1								
SAT	6/20/2020	0		1.0380	9.7	64.0	61.0	6.9	7.0								
SUN	6/21/2020	0		1.0700	9.4	64.0	61.0	6.9	7.0								
MON	6/22/2020	0		0.8930	9.7	64.0	62.0	7.0	7.1								
TUES	6/23/2020	0		1.0050	9.9	64.0	62.0	6.9	7.0								
WED	6/24/2020	0		1.0010	9.6	64.0	62.0	6.9	7.0								
THURS	6/25/2020	0		0.9440	9.9	64.0	62.0	6.9	7.0								
FRI	6/26/2020	0		1.0210	9.2	64.0	62.0	7.0	7.1					252	2	29.3	2.90
SAT	6/27/2020	0.1		0.9470	9.4	64.0	62.0	7.0	7.0								
SUN	6/28/2020	0		0.9830	9.1	64.0	62.0	7.0	7.1								
MON	6/29/2020	0		1.0010	9.9	64.0	62.0	6.9	7.0								
TUES	6/30/2020	0		0.9820	9.9	64.0	62.0	6.9	7.0								
		1.50			9.7	63.3	61.2	7.0	7.1	0							
		TOTAL PRECIP		MONTHLY AVG	MONTHLY AVG	MONTHLY INFL	MONTHLY EFFL	MAX pH 6.9	MAX pH 7.0	MON MAX	MON MAX					TOTAL NITROGEN INFLUENT	TOTAL NITROGEN EFFLUENT
															34.4	222.5	lbs/day

GRIT REMOVAL FROM PLANT AMOUNT	YARDS
SCREENINGS REMOVAL FROM PLANT AMOUNT	270.0
MAX TEMPERATURE (F)	62.0

OYSTER BAY STP FACILITY OPERATION REPORT PAGE 1 CALCULATIONS
 NY0021822

DAY	DATE	PRECIP IN/DAY	VOLUME OF SEWAGE TREATED		D.O.	TEMPERATURE (F)		pH (S.U.)		SET SOLIDS (ML/L)		CBOD ₅ (MG/L)		TSS (MG/L)		TOTAL NITROGEN	
			INST MIN	DAILY AVG		INST MAX	EFFL	INFL	EFFL	INFL	EFFL	INFL	EFFL	INFL	EFFL	INFL	EFFL
TUES	12/1/2020	0		1.257		60.0	58.0	6.9	7.1								
WED	12/2/2020	0		1.1200													
THURS	12/3/2020	0		1.1600	8.6	59.0	56.0	6.9	7.0			75.7	3.1	154	2.4	32.5	3.30
FRI	12/4/2020	0.2		1.0520	8.9	59.0	56.0	7.0	7.1								
SAT	12/5/2020	1.6		1.0690	9.9	60.0	56.0	6.9	7.0								
SUN	12/6/2020	0.1		1.2020	8.7	59.0	58.0	6.9	7.0								
MON	12/7/2020	0		1.2080													
TUES	12/8/2020	0		1.1310	9.6	59.0	57.0	6.9	7.0								
WED	12/9/2020	0		1.0700	9.2	59.0	57.0	7.0	7.1								
THURS	12/10/2020	0		1.0760	8.4	59.0	56.0	6.9	7.1			74	2	108	2	32.1	4.70
FRI	12/11/2020	0		1.0600	9.1	59.0	56.0	6.9	7.1								
SAT	12/12/2020	0		1.0490	9.4	59.0	56.0	6.9	7.0								
SUN	12/13/2020	0		1.0730	9.2	59.0	57.0	7.0	7.1								
MON	12/14/2020	0.3		1.0620	9.9	58.0	56.0	6.9	7.0								
TUES	12/15/2020	0		1.0820													
WED	12/16/2020	0		1.0300	9.9	57.0	56.0	7.0	7.1								
THURS	12/17/2020	0		1.0170	9.1	58.0	55.0	7.0	7.1			40	2	92	3.6	36.7	4.90
FRI	12/18/2020	0		1.0350	9.9	56.0	53.0	6.9	7.0								
SAT	12/19/2020	0		1.0220	9.9	56.0	54.0	6.9	7.0								
SUN	12/20/2020	0		1.0980	9.1	58.0	55.0	7.0	7.1								
MON	12/21/2020	0		0.9550	9.9	58.0	56.0	6.9	7.0								
TUES	12/22/2020	0.2		1.1040	9.8	57.0	55.0	6.9	7.0								
WED	12/23/2020	0		1.0650	9.4	57.0	56.0	7.0	7.2			101	2	98	2.4	33.7	4.20
THURS	12/24/2020	0.1		1.0430	9.6	59.0	57.0	7.0	7.1								
FRI	12/25/2020	0.3		1.1600	9.4	58.0	56.0	7.0	7.1								
SA	12/26/2020	0		1.2460	9.9	58.0	56.0	7.0	7.1								
SUN	12/27/2020	0		1.3620	9.6	59.0	57.0	7.0	7.1								
MON	12/28/2020	0		1.0060													
TUES	12/29/2020	0		1.1120	9.9	57.0	56.0	6.9	7.0								
WED	12/30/2020	0		1.0620	9	57.0	55.0	7.0	7.1			62.8	2	90	2.4	27.2	3.10
THURS	12/31/2020	0.3		1.1340	9.1	57.0	55.0	7.0	7.1								
		3.10		1.1007	9.4	58.1	55.9	7.0	7.2	0							
		TOTAL PRECIP		MONTHLY AVG	MONTHLY AVG	MONTHLY INFL	MONTHLY EFFL	MONTHLY MAX pH	MONTHLY MIN pH	MON MAX	MON MAX					TOTAL NITROGEN INFLUENT	TOTAL NITROGEN EFFLUENT
																39.5	328.7

GRIT REMOVAL FROM PLANT AMOUNT	YARDS
SCREENINGS REMOVAL FROM PLANT AMOUNT	279.0 CUBIC FEET
MAX TEMPERATURE (F)	58.0

Appendix D

Sample Semi-Annual Report (Example Format)

**Wastewater Treatment Plant:
Review and Available Capacity Determination**

SAMPLE SEMI-ANNUAL REPORT (EXAMPLE FORMAT)

Source Data: Monthly reports submitted to the NYSDEC, Division of Water titled, "Wastewater Facility Operation Report".

Semi-Annual Report on WWTP Utilization

Month, Year	Monthly Average (MGD)*

*The Design Capacity is 1.8 MGD

CONTACT

Joseph M. Heaney III, P.E.
Principal-in-Charge
jheaney@walden-associates.com

Thomas T. (Ted) Nitza, Jr., P.E.
VP/Senior Project Manager
tnitza@walden-associates.com

Headquarters
16 Spring Street
Oyster Bay, New York 11771
P: 516.624.7200
F: 516.624.3219