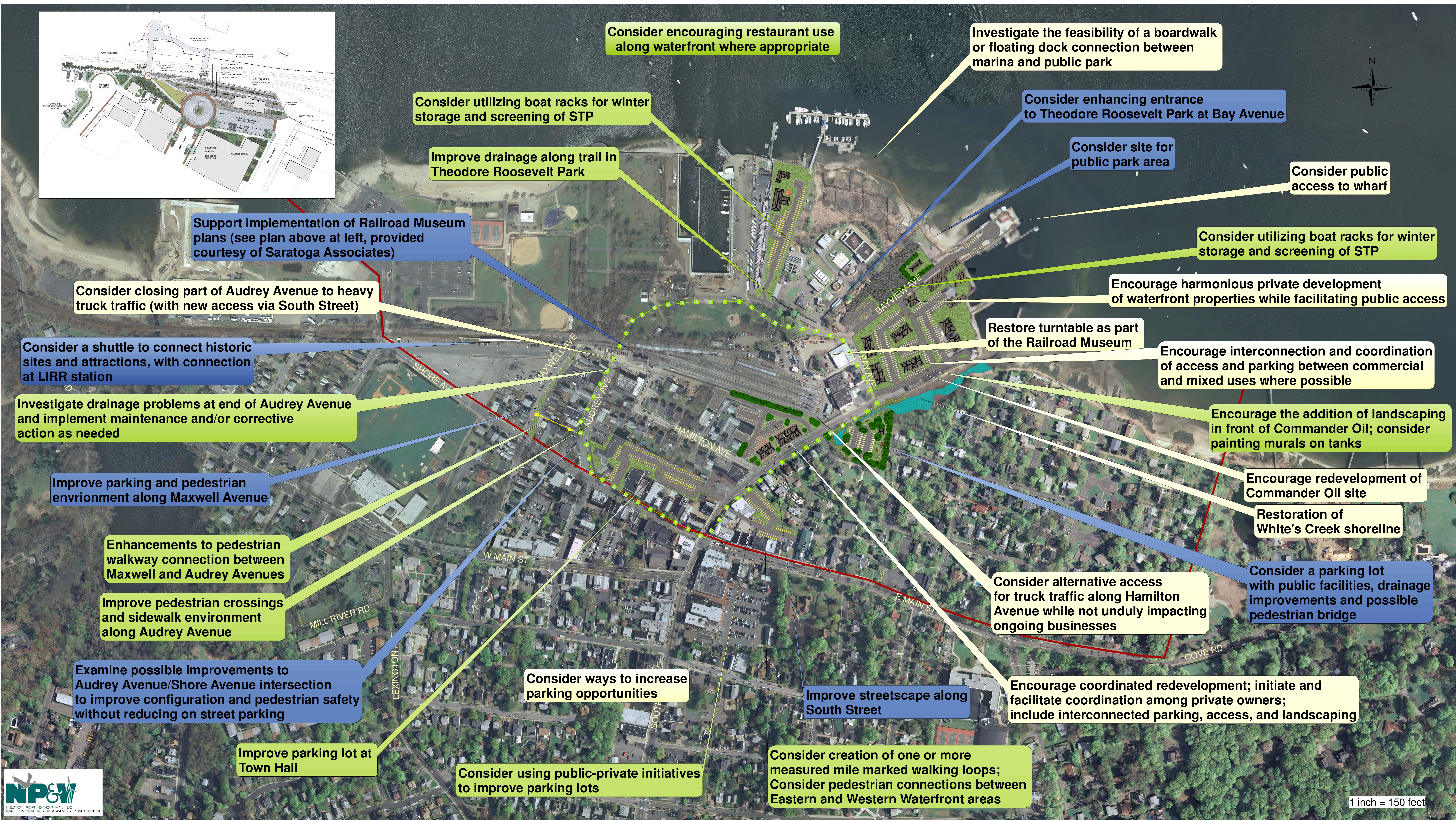




Town of Oyster Bay and New York Department of State
EASTERN WATERFRONT COMMUNITY VISION & REVITALIZATION PLAN
Long Term Concept Plan



KEY TO LABELS: **SHORT TERM GOALS** **INTERMEDIATE GOALS** **LONG TERM GOALS**

Note: Study Area is the area north of the red line

GENERAL RECOMMENDATIONS

- Create new, and enhance existing parking
- Perform a parking study to evaluate utilization of various lots over the course of a typical day and evening
- Create zone changes where appropriate and examine potential for a Marine Waterfront Zoning District
- Provide improvements to the pedestrian environment (enhanced and new crosswalks, sidewalk expansion/decorative pavers, etc.)
- Address environmental protection, enhancement and restoration through sensitive design and environmentally sensitive projects
- Improve the landscape environment (landscapes and streetscapes) through installation of street trees, benches, lighting, etc.
- Improve signage (directional and interpretive) to clearly direct visitors to key locations and provide education
- Use interpretive signage for environmental education at White's Creek
- Conduct a stormwater study and provide for drainage improvements to control stormwater runoff and improve water quality
- Encourage use of LEED (Leadership in Energy and Environmental Design) criteria and certification for sites
- Ensure compliance with FEMA flood plain development requirements, and adopted management plans
- Seek superior architecture for new and remodeled buildings

